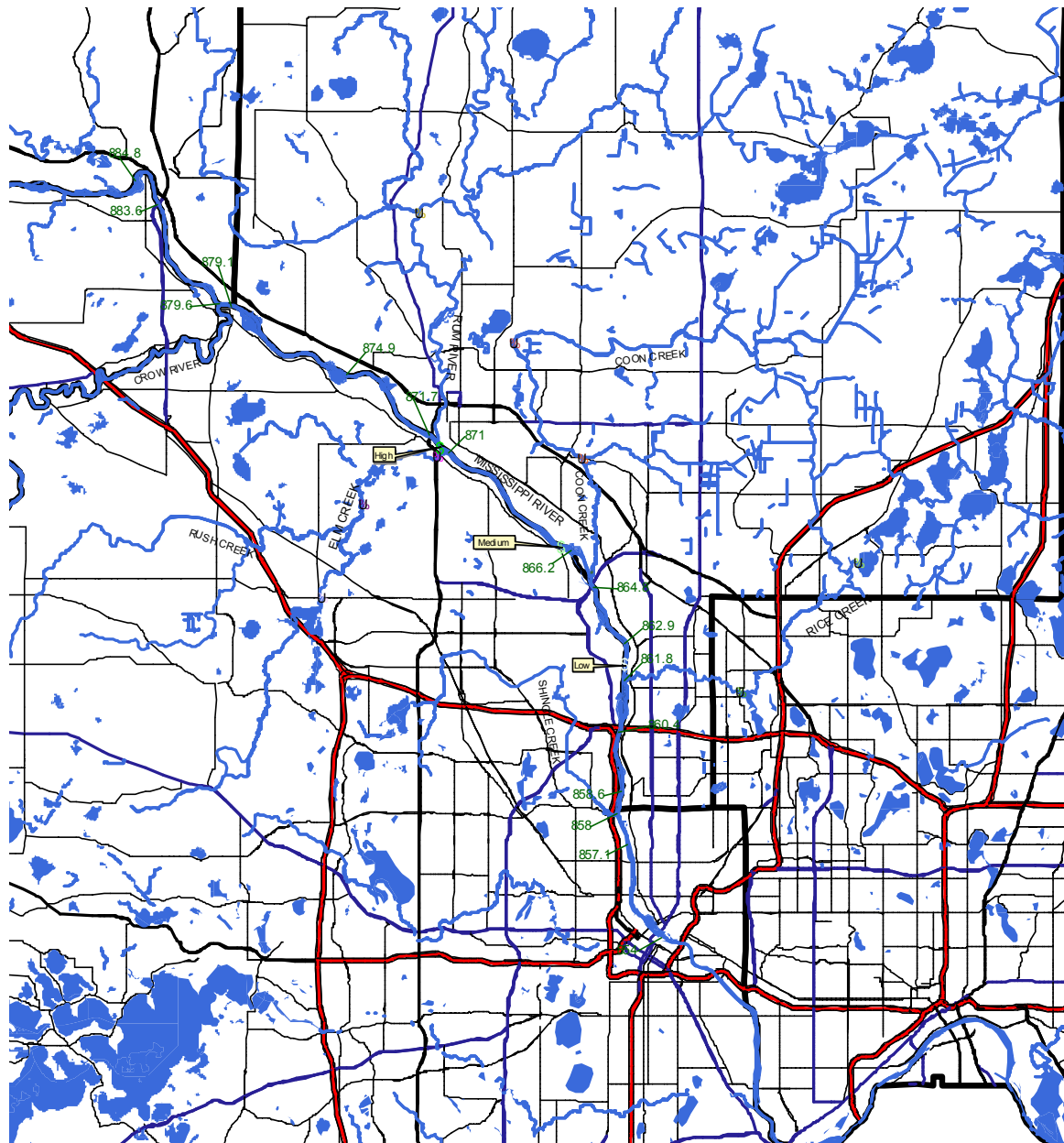


APPENDIX 4

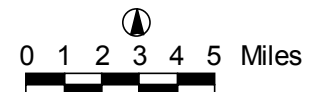
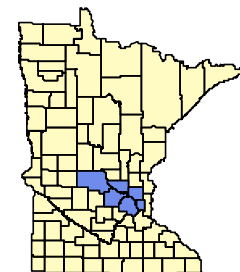
DATA MAPS USED TO DELINEATE SOURCE WATER PROTECTION PRIORITY AREA A

Minneapolis

8-Hour Time of Travel



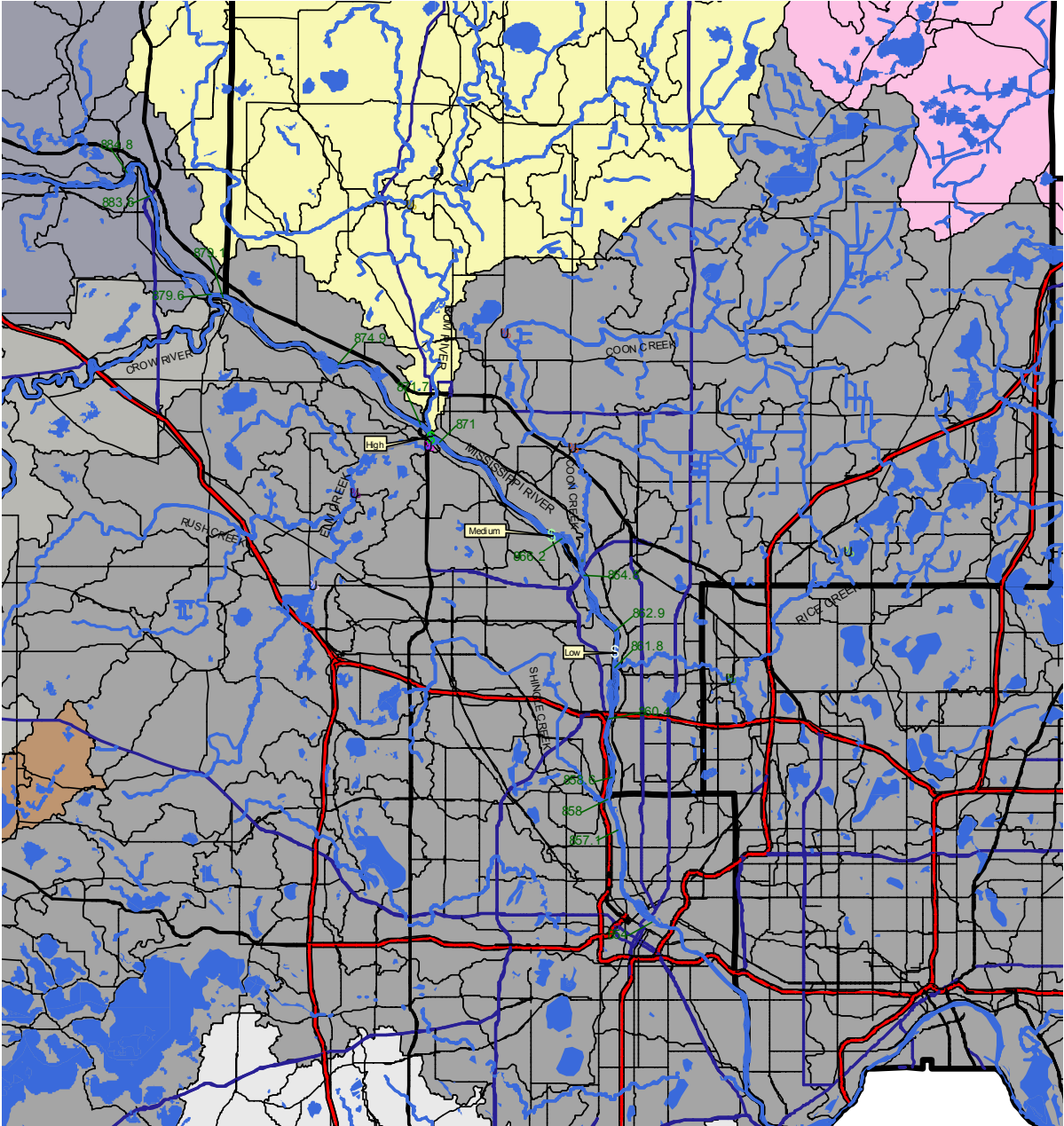
- U Baldwin Lake Outlet
- U Long Lake Rd
- U Elm Creek Road
- U US Hwy 169
- U 93rd Ave N
- U S Coon Creek Drive
- U Trott Brook
- U Northdale Blvd
- \$ Minneapolis - High Flows
- S Minneapolis - Medium Flows
- Minneapolis - Low Flows
- ▬ Rivers & Streams
- ▭ Lakes
- Roads
- ▬ Interstate Highway
- ▬ U.S. Highway
- ▬ MN Highway
- ▬ CSAH
- ▭ County Lines



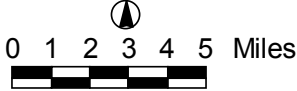
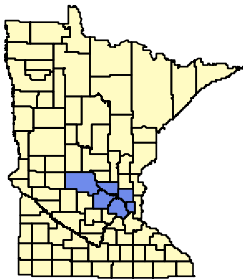
Priority Area A: Map 1

Minneapolis

8-Hour Time of Travel



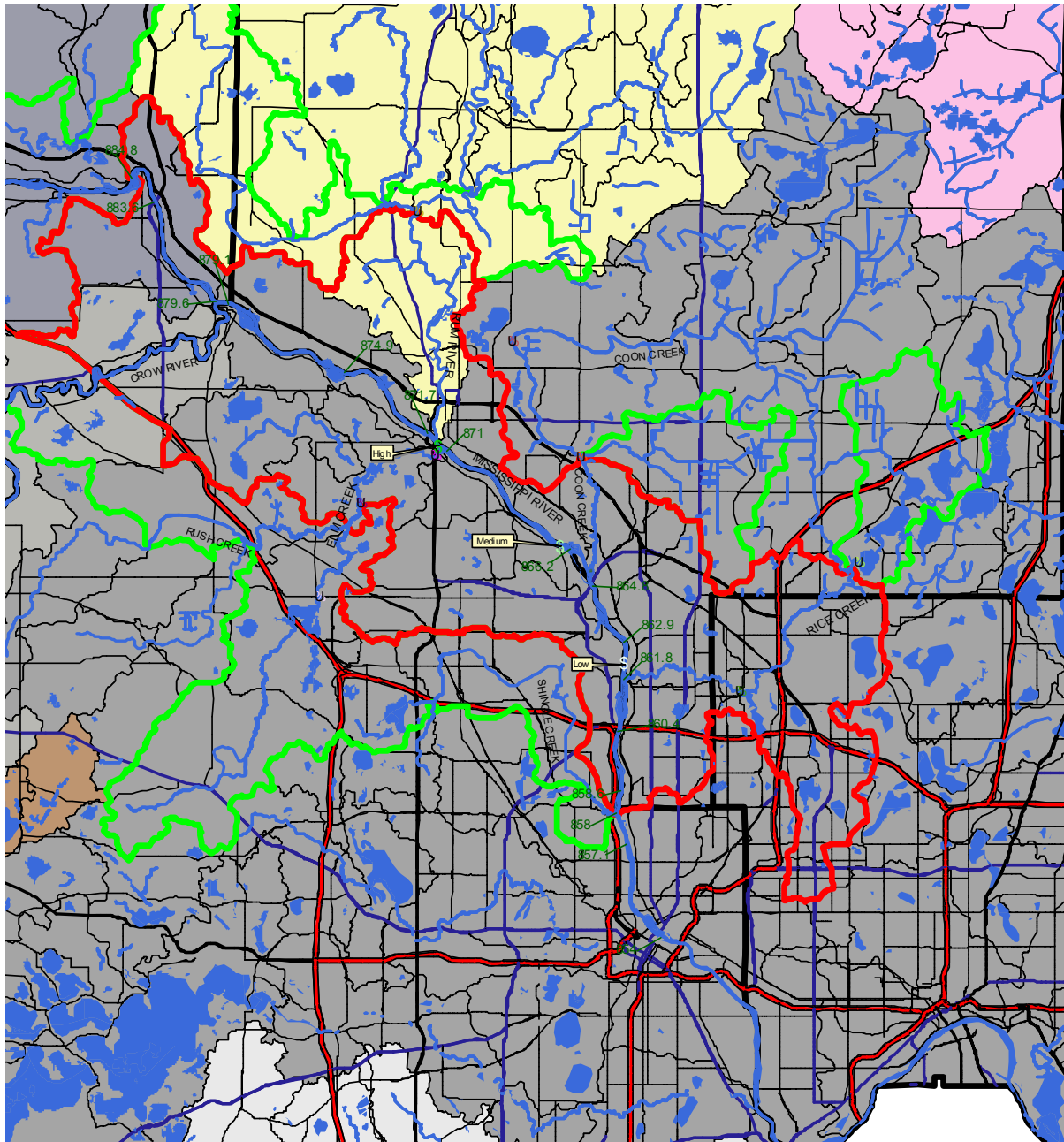
- u Baldwin Lake Outlet
- u Long Lake Rd
- u Elm Creek Road
- u US Hwy 169
- u 93rd Ave N
- u S Coon Creek Drive
- u Trott Brook
- u Northdale Blvd
- \$ Minneapolis - High Flows
- \$ Minneapolis - Medium Flows
- \$ Minneapolis - Low Flows
- Blue line Rivers & Streams
- Blue area Lakes
- Roads**
- Red line Interstate Highway
- Black line U.S. Highway
- Blue line MN Highway
- Blue line CSAH
- Black line County Lines
- Watersheds**
- Grey Clearwater-Elk
- Light Grey North-Fork-Crow
- White Lower-Minnesota
- Pink Lower-St-Croix
- Yellow Rum
- Orange South-Fork-Crow
- Dark Grey Twin-Cities



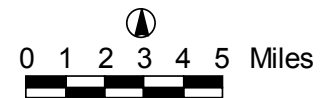
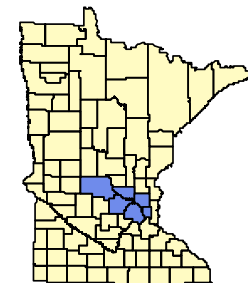
Priority Area A: Map 2

Minneapolis

8-Hour Time of Travel

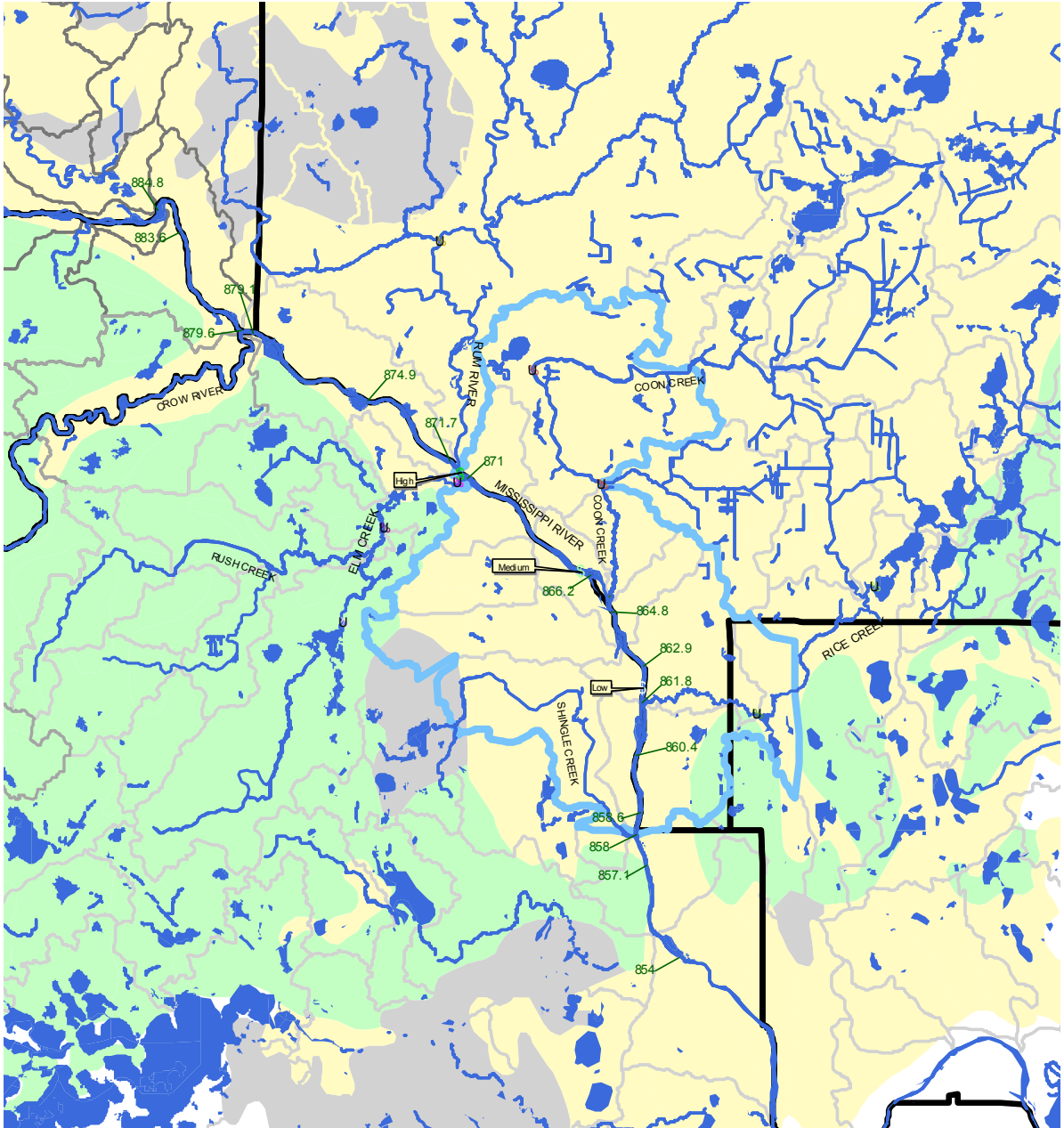


- U Baldwin Lake Outlet
- U Long Lake Rd
- U Elm Creek Road
- U US Hwy 169
- U 93rd Ave N
- U S Coon Creek Drive
- U Trott Brook
- U Northdale Blvd
- \$ Minneapolis - High Flows
- \$ Minneapolis - Medium Flows
- \$ Minneapolis - Low Flows
- △ Rivers & Streams
- Lakes
- Inner Emergency Response Area
- Outer Emergency Response Area
- Outer Source Water Management Area
- Outer Source Water Management Area
- Roads
- Interstate Highway
- U.S. Highway
- MN Highway
- CSAH
- County Lines
- Watersheds
- Clearwater-Elk
- North-Fork-Crow
- Lower-Minnesota
- Lower-St-Croix
- Rum
- South-Fork-Crow
- Twin-Cities

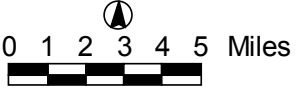
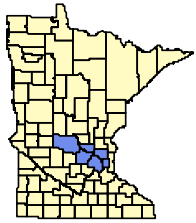


Priority Area A: Map 3

Minneapolis 8-Hour Time of Travel



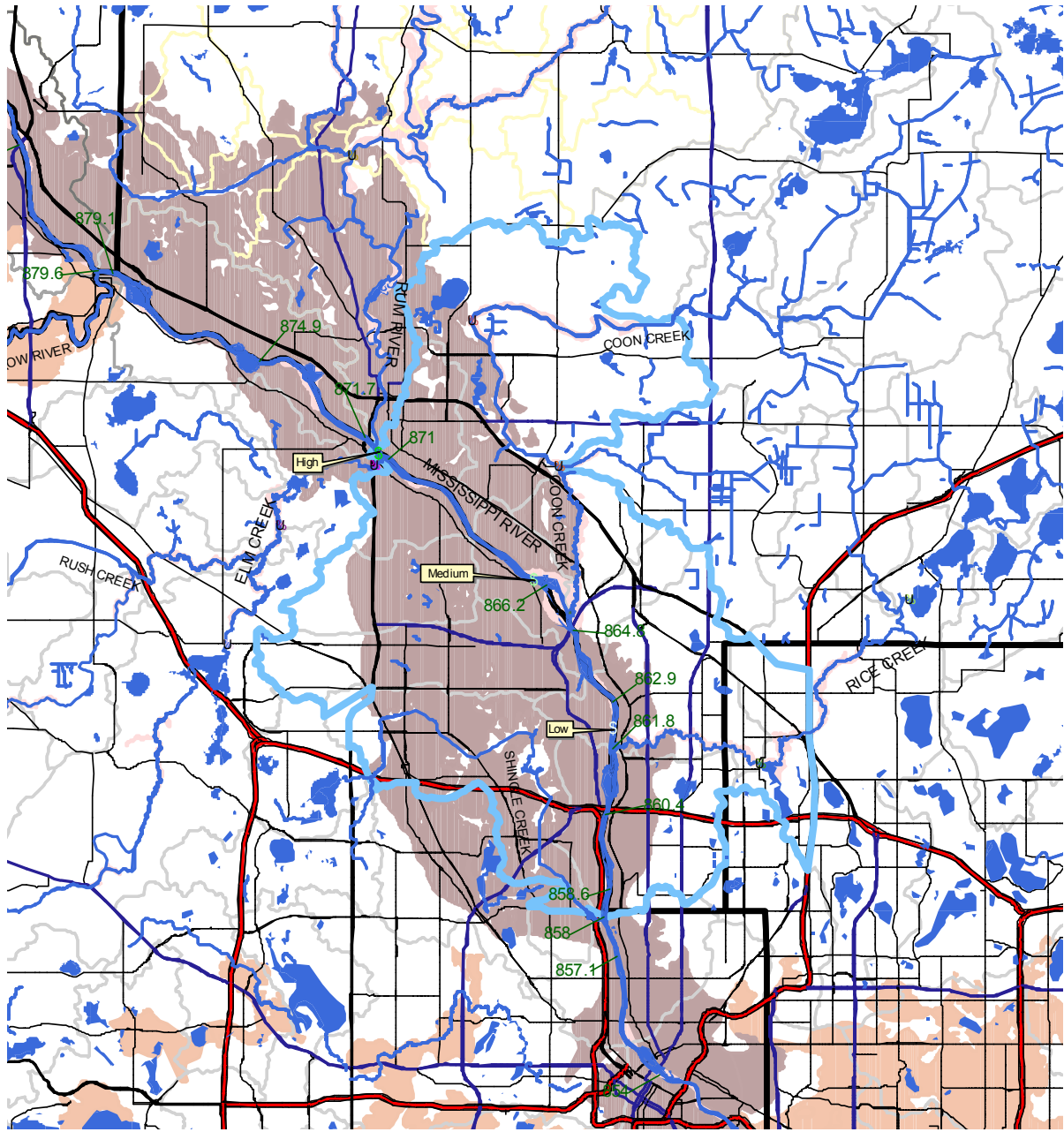
- U Baldwin Lake Outlet
- U Long Lake Rd
- U Elm Creek Road
- U US Hwy 169
- U 93rd Ave N
- U S Coon Creek Drive
- U Trott Brook
- U Northdale Blvd
- \$ Minneapolis - High Flows
- \$ Minneapolis - Medium Flows
- \$ Minneapolis - Low Flows
- △ Rivers & Streams
- Lakes
- Draft Priority A Source Water Protection Area
- County Lines
- Watersheds
 - Clearwater-Elk
 - Crow
 - Rum
 - Twin-Cities
- Theme51.shp
 - Antigo-Chetek-Mahtomedi
 - Burkhardt-Mahtomedi-Chetek
 - Erin-Kikenny-Boots
 - Esterville-Dickman-Dakota
 - Hayden-Boots-Burnsville
 - Hayden-Cordova-Hamel
 - Hayden-Nessel-Dundas
 - Heyder-Rifle-Kingsley
 - Hubbard-Isan-Duelm
 - Kingsley-Mahtomedi-Quam
 - Lester-Hamel-Le Sueur
 - Lester-Hayden-Muskego
 - Nymore-Rifle-Lino
 - Rifle-Isanti-Markey
 - Santiago-Kingsley-DeMontreville
 - Waukegan-Chetek-Zimmerman
 - Zimmerman-Isanti-Lino



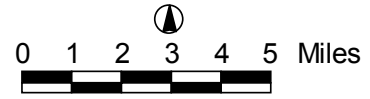
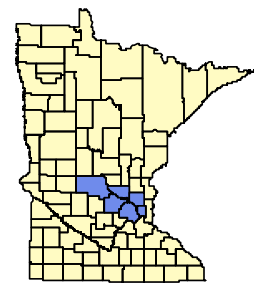
Priority Area A: Map 4

Minneapolis

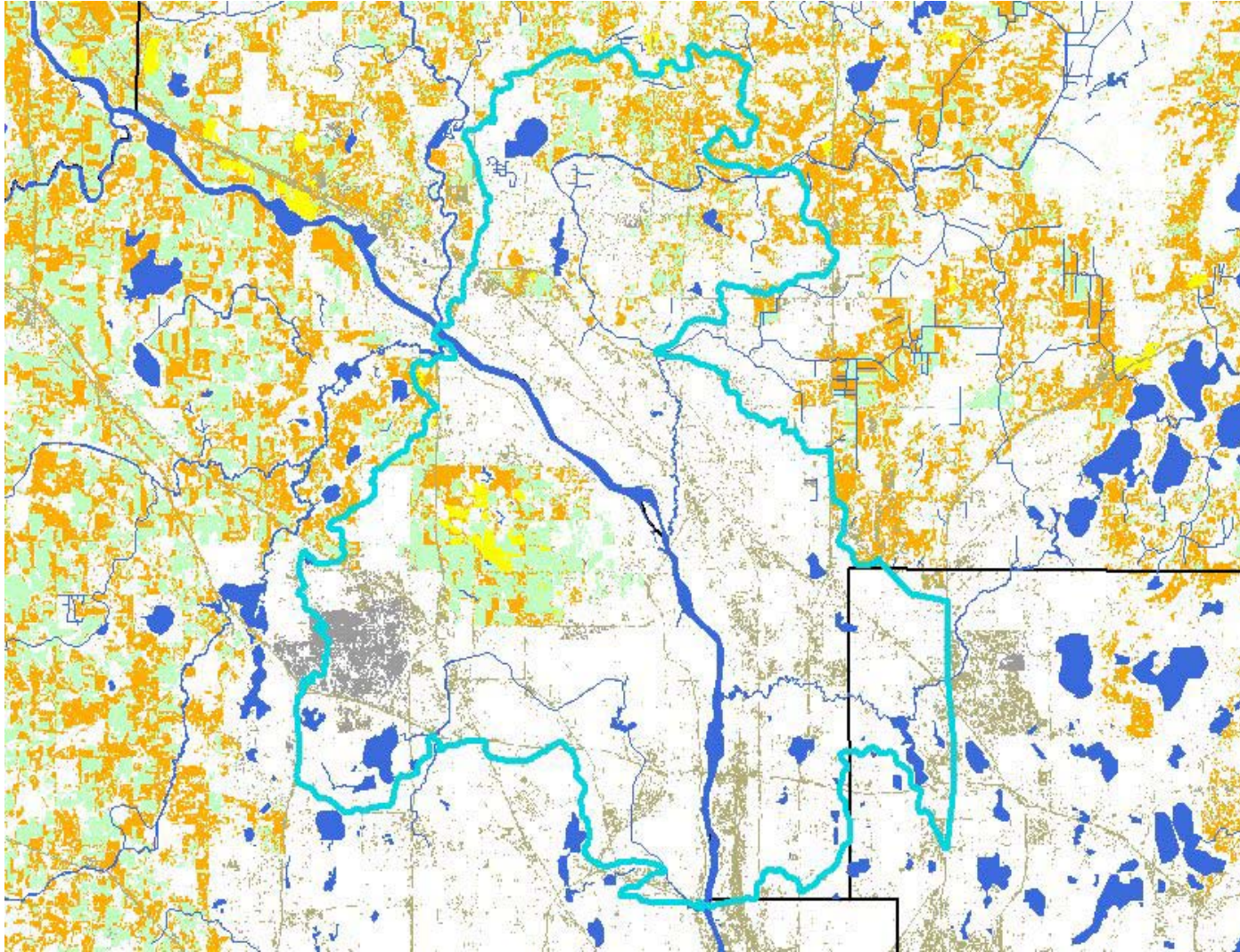
8-Hour Time of Travel



- U Baldwin Lake Outlet
- U Long Lake Rd
- U Elm Creek Road
- U US Hwy 169
- U 93rd Ave N
- U S Coon Creek Drive
- U Trott Brook
- U Northdale Blvd
- \$ Minneapolis - High Flows
- \$ Minneapolis - Medium Flows
- \$ Minneapolis - Low Flows
- △ Rivers & Streams
- △ Lakes
- △ Draft Priority A Source Water Protection Area
- Roads
 - △ Interstate Highway
 - △ U.S. Highway
 - △ MN Highway
 - △ CSAH
- County Lines
- Watersheds
 - △ Clearwater-Elk
 - △ Crow
 - △ Rum
 - △ Twin-Cities




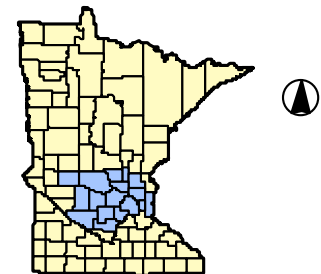
Priority Area A: Map 5



Minneapolis

8-Hour Time of Travel

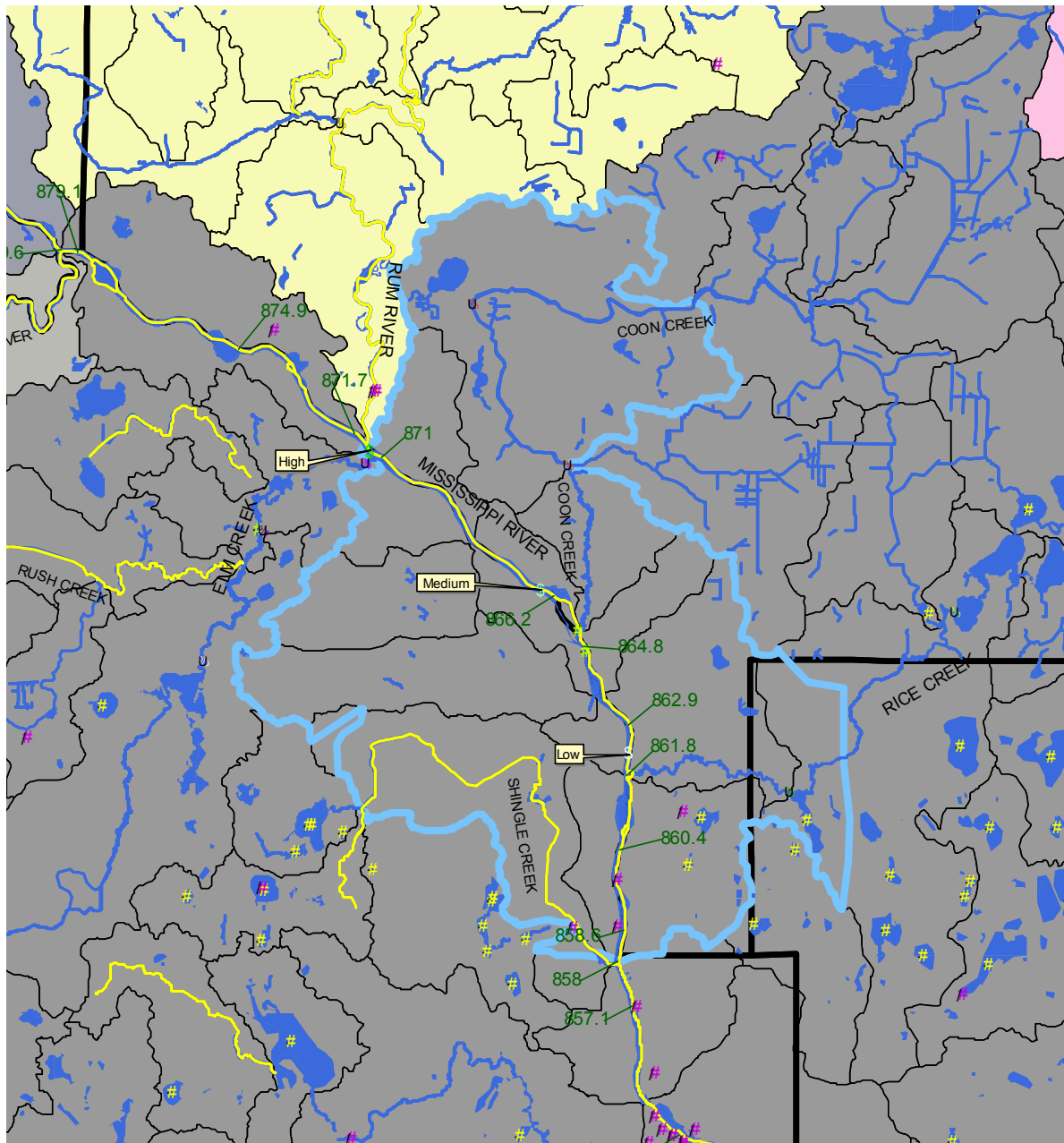
-  Minneapolis Priority A SWP Area
-  Rivers & Streams
-  Lakes
-  County Lines
- 1992 Land Use
 -  Commercial/Industrial/Transportation
 -  Quarries/Strip Mines/Gravel Pits
 -  Pasture/Hay
 -  Row Crops
 -  Small Grains



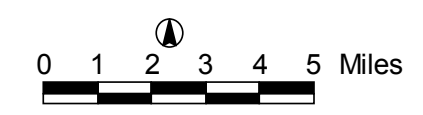
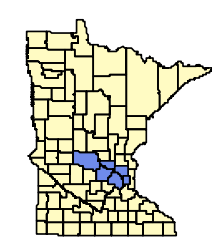
Priority Area A: Map 6

Minneapolis

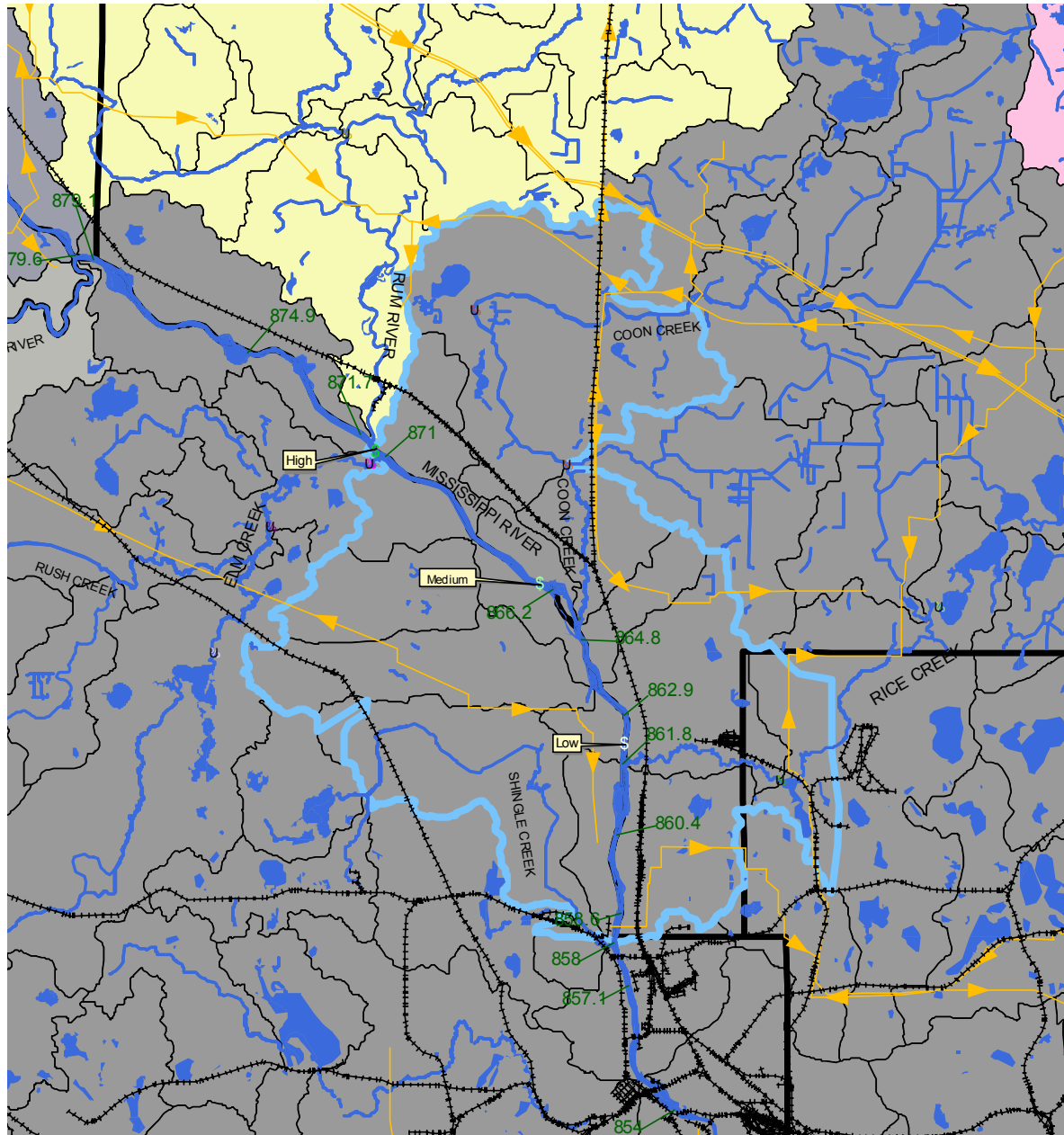
8-Hour Time of Travel



- U Baldwin Lake Outlet
- U Long Lake Rd
- U Elm Creek Road
- U US Hwy 169
- U 93rd Ave N
- U S Coon Creek Drive
- U Trott Brook
- U Northdale Blvd
- # USGS Gauging Stations
- # NPDES Permits
- \$ Minneapolis - High Flows
- \$ Minneapolis - Medium Flows
- \$ Minneapolis - Low Flows
- Impaired Streams
- Rivers & Streams
- Impaired Waters
- Lakes
- Draft Priority A Source Water Protection Area
- County Lines
- Watersheds
 - Clearwater-Elk
 - Crow
 - Lower-St-Croix
 - Rum
 - South-Fork-Crow
 - Twin-Cities



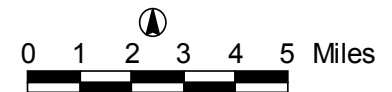
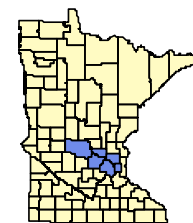
Priority Area A: Map 7



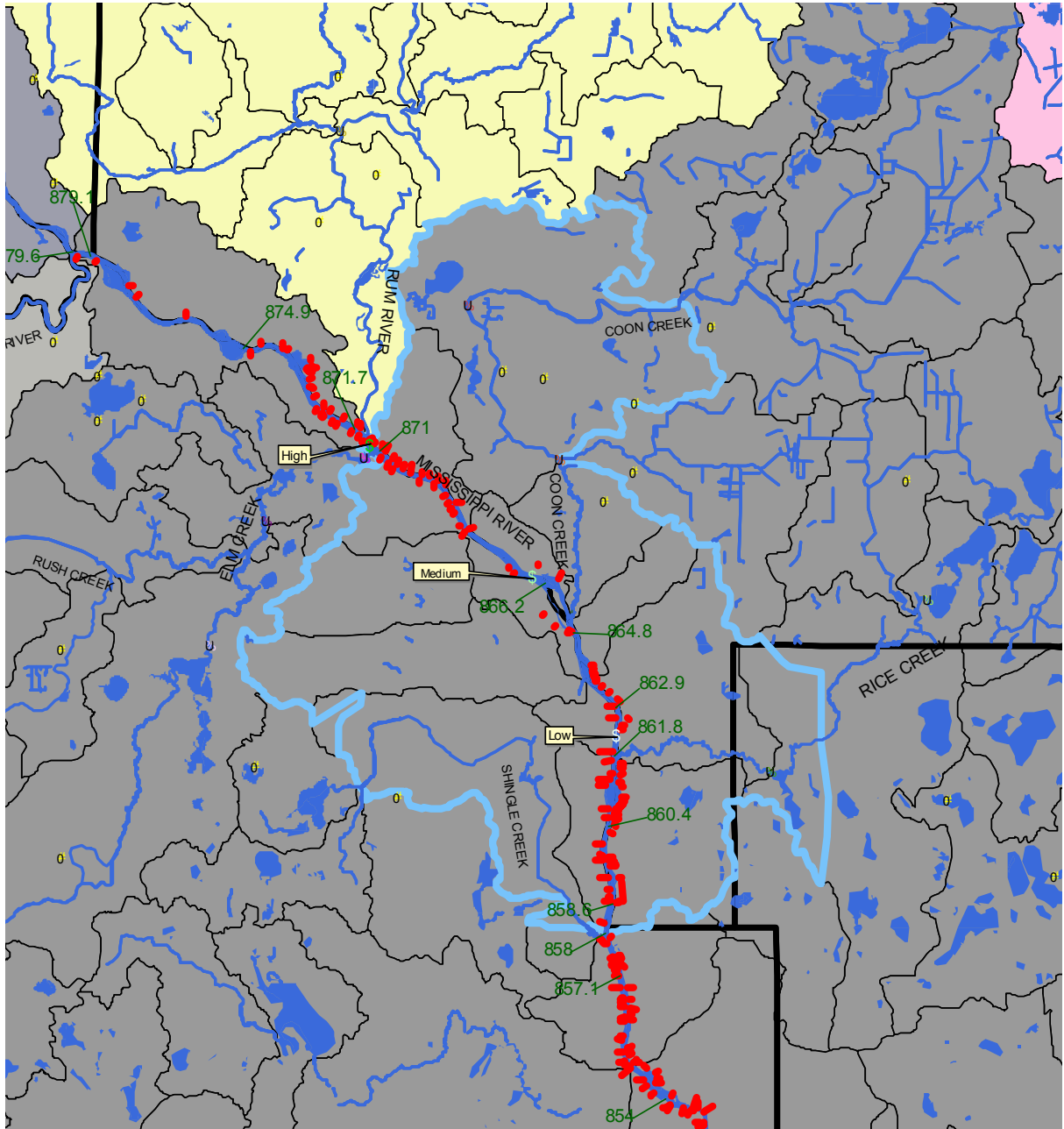
Minneapolis

8-Hour Time of Travel

- u Baldwin Lake Outlet
- u Long Lake Rd
- u Elm Creek Road
- u US Hwy 169
- u 93rd Ave N
- u S Coon Creek Drive
- u Trott Brook
- u Northdale Blvd
- \$ Minneapolis - High Flows
- \$ Minneapolis - Medium Flows
- \$ Minneapolis - Low Flows
- Railroads
- Pipelines
- Rivers & Streams
- Lakes
- Draft Priority A Source Water Protection Area
- County Lines
- Watersheds
- Cleanwater-Elk
- Crow
- Lower-St-Croix
- Rum
- South-Fork-Crow
- Twin-Cities



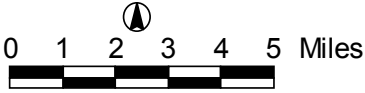
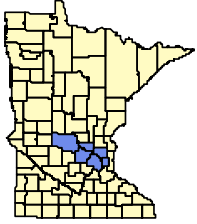
Priority Area A: Map 8



Minneapolis

8-Hour Time of Travel

- U Baldwin Lake Outlet
- U Long Lake Rd
- U Elm Creek Road
- U US Hwy 169
- U 93rd Ave N
- U S Coon Creek Drive
- U Trott Brook
- U Northdale Blvd
- \$ Minneapolis - High Flows
- \$ Minneapolis - Medium Flows
- \$ Minneapolis - Low Flows
- Storm Sewer Outlets
- Feedlots
- Rivers & Streams
- Lakes
- Draft Priority A Source Water Protection Area
- County Lines
- Watersheds
 - Cleanwater-Elk
 - Crow
 - Lower-St-Croix
 - Rum
 - South-Fork-Crow
 - Twin-Cities



Priority Area A: Map 9