



UPPER MISSISSIPPI RIVER SOURCE WATER PROTECTION PROJECT

2014 Progress Report

Protecting Drinking Water through Partnerships

Summary of UMRSWPP Activities for 2014 Include:

- 💧 St. Paul Regional Water Services, and the Cities of Minneapolis and St. Cloud working with MDH on Source Water Protection plan amendments.
- 💧 Letter of support for grant application and participation as support in One Watershed One Plan project with the CROW coalition of watersheds.
- 💧 Members of and participation in the following groups:
 - 💧 Source Water Collaborative,
 - 💧 Clean Water Action Steering Committee,
 - 💧 Upper Mississippi River Basin Association (spill response).
- 💧 Provided feedback to the Minnesota Pollution Control Agency on the Upper Mississippi River TMDL project.
- 💧 Participated in the Minnesota Association of Watershed Districts (MAWD) and Minnesota Rural Water Association (MRWA) conference tradeshows.
- 💧 Active presenters and participants in the monthly National Park Service Mississippi River Forum presentations.
- 💧 Applied for pass-through funding for Watershed Districts, WMOs and Soil and Water Conservation Districts through Minnesota Department of Health (MDH) Implementation Grants.
- 💧 **Grant Opportunities:** The City of St. Cloud received a MDH implementation grant to partially fund a raw water analyzer.



The **City of Minneapolis** received pass-through funding from the MDH Source Water Protection competitive grant dollars for the Anoka Conservation District to fund projects located in the Coon Creek Watershed. Construction of six curb-cut rain gardens within a residential neighborhood adjacent to Sand Creek in Coon Rapids was completed.



Cumulatively, the six curb-cut rain gardens provide 2,638 cubic feet of storage. The cumulative contributing drainage area is 114.6 acres and the rain gardens will reduce volume by 7.2 acre-feet, total suspended solids by 2,725 pounds, and total phosphorus by 8.4 pounds annually (WinSLAMM model estimates). These reductions are seen in Sand Creek, which is a tributary to Coon Creek and ultimately the Mississippi River. The rain gardens reduce pollutant and nutrient loading to a surface water source water supply.

In January the City of Minneapolis hosted a special Mississippi River Forum meeting at its Fridley Water Treatment Plant. The meeting focused on how the City treats the water it provides to its customers and the importance of having a clean, sustainable water source. After a brief presentation, the attendees were given a tour of the water plants and pumps station on the Fridley Campus.

The tour was of one of several given to groups specifically interested in the how quality of the water in the Mississippi River impacts the water treatment process.



The **St. Paul Regional Water Services, (SPRWS)** continues to partner with the Vadnais Lake Area Watershed Management Organization, (VLAWMO.) To support the Lambert Creek Bacterial Source Identification Project, SPRWS staff are analyzing *E. coli* levels. The project focus is on determining the source of the *E. coli*.



SPRWS partnered with the River Journey project team to provide custom tours of SPRWS facilities in support of high school students' exploration of their water system. "River Journey: Exploring the Value of the Mississippi River" is an art-led environmental education project that takes place at River's Edge Academy Charter Environmental High School in St. Paul. Students took a journey of water through their school, tracing the flow of water from their kitchen sink to the Mississippi River, both upstream and downstream. SPRWS hosted upstream tours at the SPRWS Intake on the Mississippi River, Sucker Lake, and the

McCarron's Water Treatment Plant. SPRWS was also a partner in the initial development of the model in 2011. For more information see <http://rea-river-journey.blogspot.com>.



SPRWS has agreed to participate in the One Watershed One Plan pilot project for the Crow River Organization of Water, (CROW.)

💧 The **City of St. Cloud** is partnering with Sherburne, Benton and Stearns Counties in grant applications for on-the-ground stormwater improvements that will provide a direct positive impact to the drinking water supply resource. The City completed a drainage analysis on the Northeast area to determine strategies for abatement of sediment loading to the Mississippi River. City staff are working on a list of recommended actions to improve the stormwater runoff including:



1. **Education**
2. **Street Sweeping**
3. **Stabilize Right-of-way**
4. **Gravel Alleys and Parking Lots**
5. **Underground Storage / Settling Basins**
6. **Rain Gardens**

Shane Lund, Water Quality Coordinator for **St. Cloud** presented at the National Park Service Mississippi River Forum July meeting; Topic: “Where does it go when I flush?” This was accompanied by a tour of the wastewater treatment plant.

💧 The **City of St. Cloud** participates in elementary school water festivals with the Sauk River Watershed.

💧 They actively participate in the Central Minnesota Water Education Alliance (CMWEA), providing funding, participation in development of educational materials and display educational information at several community events like the Home Show and Sustainability Expo and Summertime by George.

💧 The City received a \$7,750 Minnesota Department of Health Source Water Protection Competitive grant to purchase a Raw Water Analyzer for use in the water treatment plant.



Conferences: UMRSWPP staffed a tradeshow booth at the 2014 (MAWD) Conference in December and the (MRWA) Conference in early March 2014. The purpose was networking and education with the other drinking water utilities, WDs, WMOs, state and local government agencies, and other private consulting firms. Understanding what the UMRSWPP is about and inclusion of drinking water protection in plan updates is an important step in protecting the drinking water resource.

2014 Financial Expenditures: \$10,574.01 was spent on meetings, grant writing and educational display items. In addition, the three utilities contributed over 180 hours of in-kind time dedicated to the projects at a cost of over \$16,000. Dedicated funding is committed to this project by all three utilities.

UMRSWPP Dedicated Fund Expenditure 2014	
Beginning Balance (2014)	\$20,633.09
2014 Expenses (non-grant)	-\$8,409.62
2014 Utility Contributions	\$20,000.00
2014 Interest Income	\$1,488.15
Ending Balance	\$33,711.62

UMRSWPP Plan Update: The UMRSWPP team will be gathering information to update the source water protection plan shared by the three utilities, then each utility will develop strategies that pertain to their priority “A” area – which is the eight-hour time-of-travel above their intake pipe. We will be focusing on stormwater runoff and other threats to the drinking water supply – the Mississippi River. We will also be focusing on maintaining close relationships with the Watershed Districts and the Water Management Organizations to partner on sound mitigation practices. Please contact us if you are interested in participating on our advisory team.

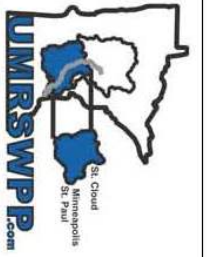
If you or anyone you know wish to be added to our email list, please send a request to

umrswpp@gmail.com

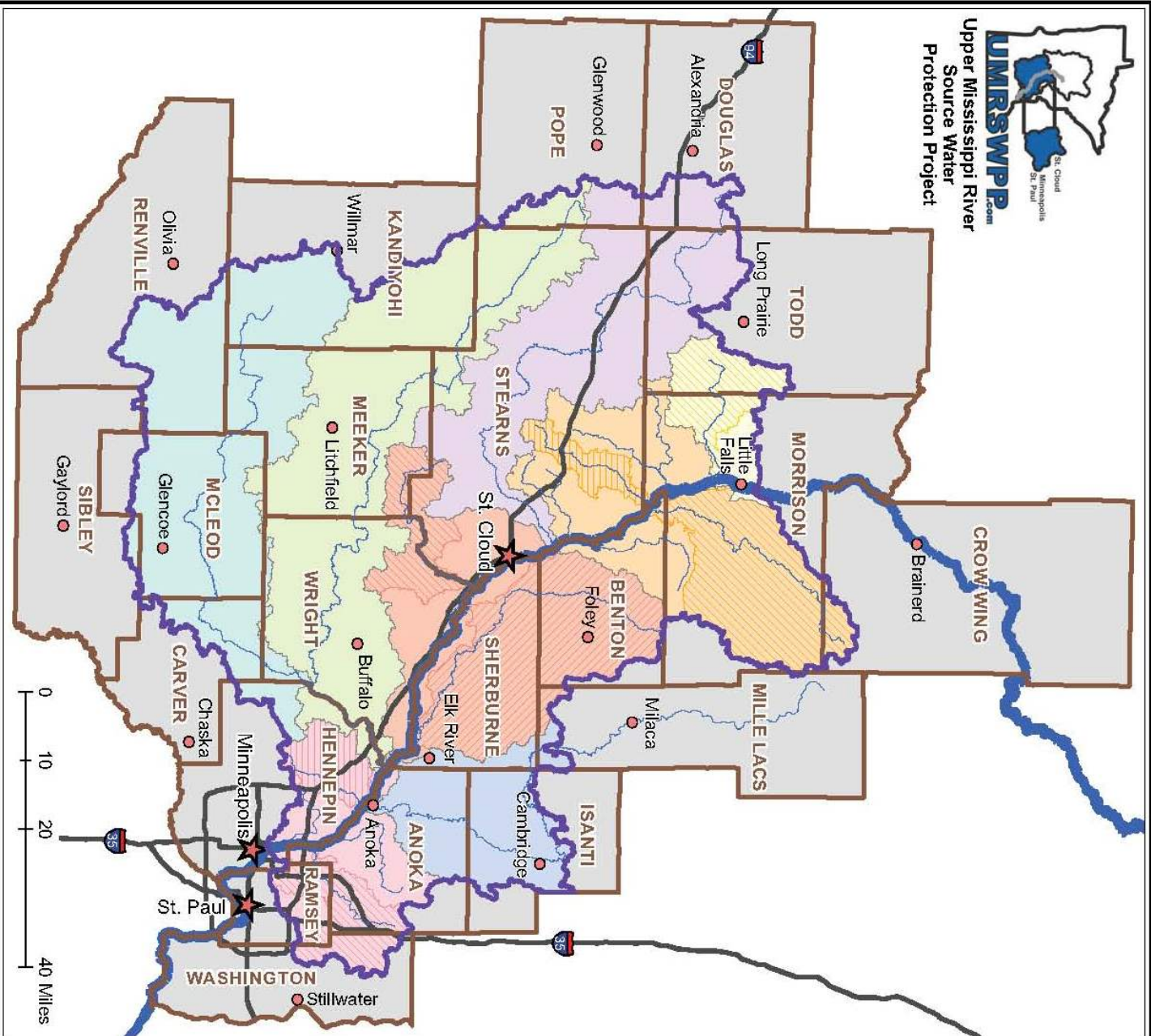
For additional information, contact the following project staff:

Lisa Vollbrecht	St. Cloud Public Utilities	320-255-7225	Lisa.Vollbrecht@ci.stcloud.mn.us
Justine Roe	St. Paul Regional Water Services	651-266-1628	Justine.Roe@ci.stpaul.mn.us
George Kraynick	Minneapolis Water Works	612-661-4923	George.Kraynick@minneapolismn.gov
Marilyn Bayerl	Bayerl Water Resources	320-766-6126	Marilyn@BayerlWaterResources.com





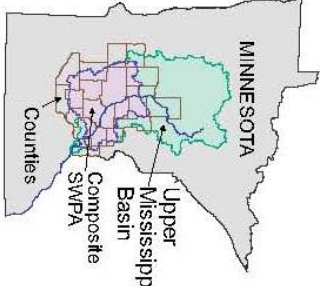
Upper Mississippi River
Source Water
Protection Project



Composite Source Water Protection Area (SWPA) for St. Cloud, St. Paul and Minneapolis

- Source Water Protection Area
 - County Boundary
 - Mississippi River
 - Tributary River or Stream
 - Interstate Highway
 - Source Water City
 - County Seat
- Major Watersheds**
- Mississippi River - Brainerd
 - Mississippi River - Sartell
 - Sauk River
 - Mississippi River - St. Cloud
 - Rum River
 - North Fork Crow River
 - South Fork Crow River
 - Mississippi River - Twin Cities
- Tributary Watersheds**
- Swan River
 - Spunk Creek
 - Clearwater River
 - Elm Creek
 - Platte River
 - Elk River
 - Rice Creek

Watershed information is from Minnesota Department of Natural Resources (DNR) - Division of Waters, Minnesota Watersheds, 1999.



Prepared by Streams County Soil and Water Conservation District (SWCD)

