



UPPER MISSISSIPPI RIVER SOURCE WATER PROTECTION PROJECT

2012 Progress Report

Protecting Drinking Water through Partnerships

Summary of UMRSWPP Activities for 2012 Include:

- Completed a “Legacy”-funded competitive grant from the Minnesota Department of Health.
- Assisted the Minnesota Pollution Control Agency on the Upper Mississippi River TMDL project.
- Participated in the Minnesota Association of Watershed Districts (MAWD) and Minnesota Association of Soil & Water Conservation Districts conference tradeshows.
- Developed an interactive website to assist in prioritization of projects within the Source Water Protection Areas of the three utilities.
- Met with sixteen Watershed Districts (WD) and Watershed Management Organizations (WMO) to better understand priorities and how to assist.

Grant Opportunities: In 2011 and 2012, the UMRSWPP received a Source Water Protection Competitive Grant from the Minnesota Department of Health (MDH) for \$30,000, to be matched with cash of \$30,000 from the UMRSWPP. The UMRSWPP was instrumental in the award of \$2,000 to the City of Minneapolis Water Works and \$10,000 to the St. Paul Regional Water Services for projects specific to their needs. The competitive grant was for the following efforts:

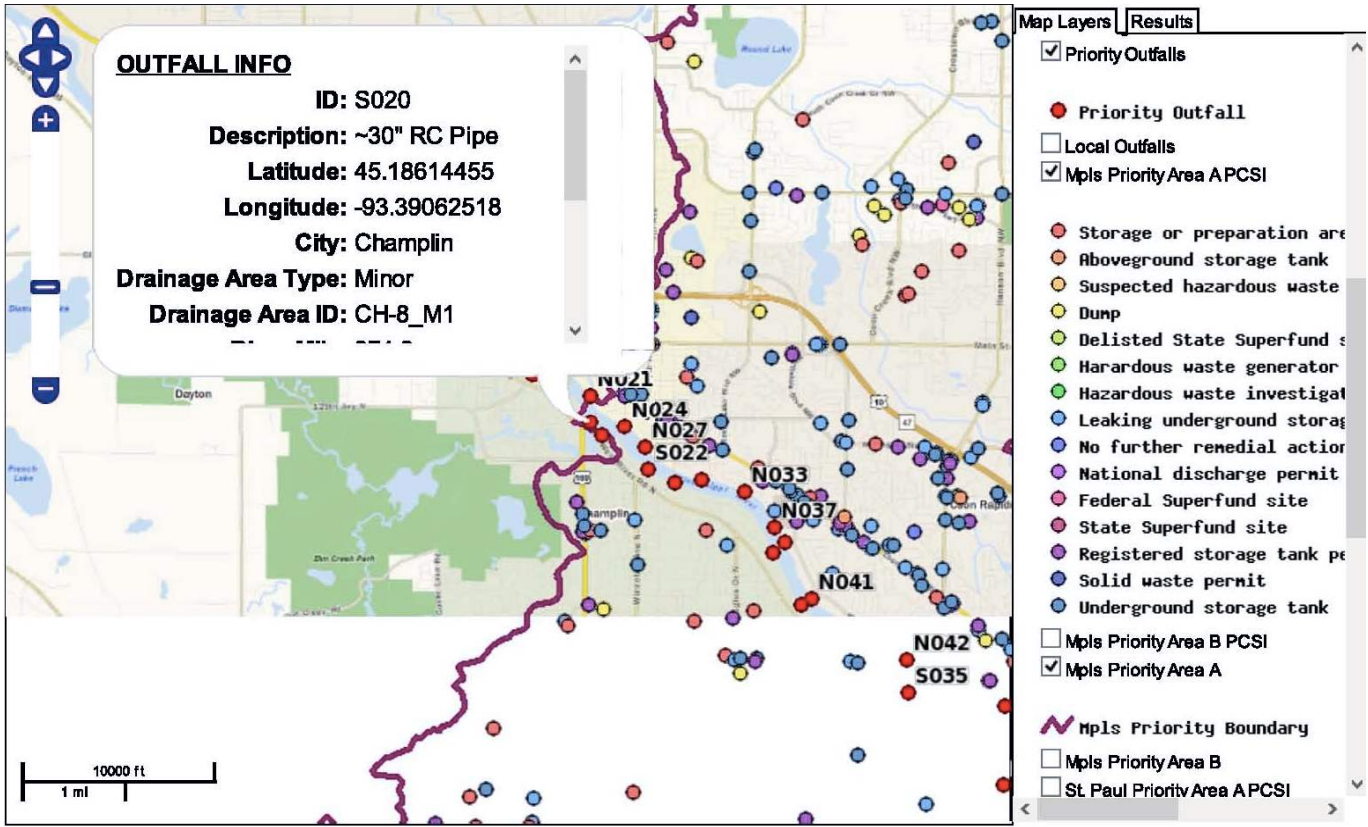
- Identify and prioritize needed Best Management Practices (BMP) within the protection area by working closely with the WD and WMO.
- Work with existing clean water media campaigns to develop an effective education campaign focused on drinking water.

Meeting with the WD and WMO to establish partnerships was a main focus for 2012. In an effort to support collaboration and BMPs within the drainage areas to the Mississippi River, UMRSWPP has commented on Total Maximum Daily Loads (TMDLs), planning updates, and provided letters of support for grant applications. The UMRSWPP members have also been active participants, advocating for drinking water protection, in the Upper Mississippi River TMDL meetings, Upper Mississippi River Association, Mississippi River Forum, the Environmental Working Group, Minnesota Association of Watershed Districts, and the Water Resources Conference.

2012 Financial Expenditures: \$27,472.28 was spent on projects listed in the MDH competitive grant. Many of the above listed measures were funded by the grant. The three utilities contributed over 180 hours of in-kind time dedicated to the projects at a cost of over \$16,000.

UMRSWPP Dedicated Fund Expenditure 2012	
Beginning Balance (2012)	\$35,598.15
2012 Expenses (non-grant)	-\$5626.18
2012 Expenses (MDH Grant)	-\$27,472.28
Sub-total	\$33,098.46
2012 MDH Grant payment	\$28,319.01
2012 Interest Income	\$252.41
Ending Balance	\$33,098.46

Interactive Website: Additionally, part of the MDH competitive grant was used to create an interactive website. The capability of this site is such that you can click on an area of the Mississippi River within the UMRSWPP priority area and find photos of drainage points to the River, along with drainage areas if available and links to the MPCA monitoring website. Potential contaminant sources are also mapped within this area. Projects completed within this boundary can be added by UMRSWPP and we are hopeful you will find this to be a useful tool to help track BMPs and progress of projects within this drainage area. Play around with this site – we welcome feedback!



UMRSWPP designed by FLAT ROCK GEOGRAPHICS X,Y:482749.50000, 5005145.90000 Lat, Lon: 45.200, -93.220 Scale: 1:68031

From the above description, you are able to click on a link and the photo to the right appears. This is an example of the capability of the site.



Conferences: UMRWPP staffed a tradeshow booth at the 2012 MAWD Conference in December and the MASWCD Conference in early January 2013. The purpose was demonstration of the new interactive website developed in conjunction with the MDH grant. The secondary purpose was networking and education with the WDs, WMOs, state and local government agencies, and other private consulting firms. Inclusion of drinking water protection in plan updates the WDs, WMOs, county and local jurisdictions located within the source water protection area of the cities of Minneapolis, St. Cloud and the St. Paul Regional Water Services is important in protecting the resource.



Educational Materials: Working with the existing clean water media campaigns in the Minneapolis/St. Paul area and the St. Cloud area, UMRWPP reviewed and edited education materials to suit drinking water education. These ads will be utilized at trade shows, in the drinking water facilities for public education and placed on www.umrswpp.com.

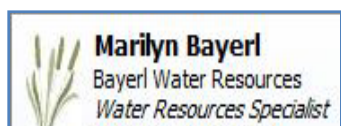


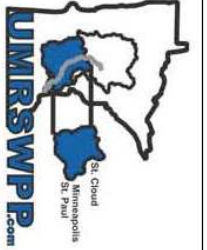
Memorial: Mr. John Blackstone was hired by St. Paul Regional Water Services (SPRWS) in 2004 upon sterling recommendations from the US Army Corps of Engineers, where he had worked a full career and retired. John lived up to and surpassed these recommendations. He was active in all facets of SPRWS, juggling many projects to favorable conclusions, and displaying an enthusiastic vibrancy. He consistently replied to “How’s it going John?” with “Terrific, if it got any better I would have to take something for it.” John was a character. He was known for his large collection of hats; including a Sherlock Holmes replica and his frequently worn fedora, and his funny cartoon themed ties. Mr. Blackstone was president of the Professional Employees Association, president of the American Society of Engineers and an active civic leader and organizer. He was famous for his sugarless rhubarb pie, ginger bread houses and endless collaboration and celebration efforts. He was a great communicator and began each project with building relationships; this was his hallmark. All phone calls were answered “Blackstone here” and all emails were finished by “Please contact me if I can be of any assistance.” John will be dearly missed.

If you or anyone you know wish to be added to our email list, please send a request to umrswpp@gmail.com

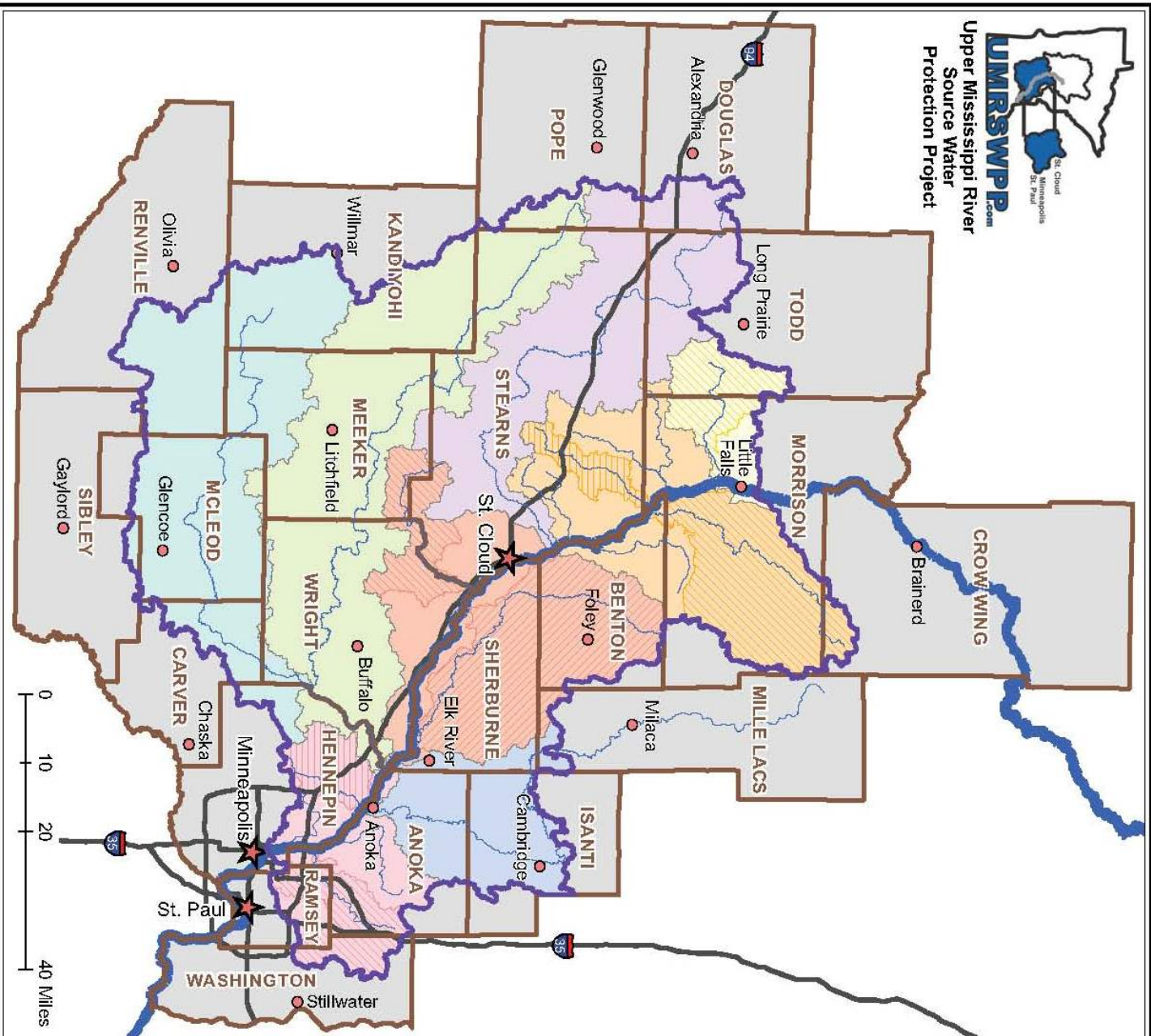
For additional information, contact the following project staff:

Lisa Vollbrecht	St. Cloud Public Utilities	320-255-7225	Lisa.Vollbrecht@ci.stcloud.mn.us
Justine Roe	St. Paul Regional Water Services	651-266-1628	Justine.Roe@ci.stpaul.mn.us
George Kraynick	Minneapolis Water Works	612-661-4923	George.Kraynick@minneapolismn.gov
Annika Bankston	Minneapolis Water Works	612-661-4975	Annika.Bankston@minneapolismn.gov
Marilyn Bayerl	Bayerl Water Resources	320-766-6126	Bayerl@runestone.net





Upper Mississippi River
Source Water
Protection Project



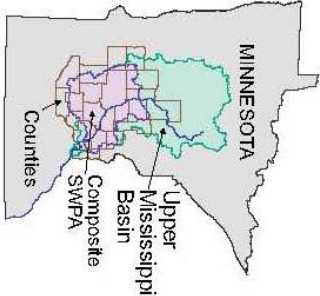
Composite Source Water Protection Area (SWPA) for St. Cloud, St. Paul and Minneapolis

	Source Water Protection Area
	County Boundary
	Mississippi River
	Tributary River or Stream
	Interstate Highway
	Source Water City
	County Seat

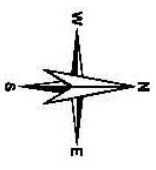
Major Watersheds	
	Mississippi River - Brainerd
	Mississippi River - Sartell
	Sauk River
	Mississippi River - St. Cloud
	Rum River
	North Fork Crow River
	South Fork Crow River
	Mississippi River - Twin Cities

Tributary Watersheds	
	Swan River
	Spunk Creek
	Clearwater River
	Elm Creek
	Platte River
	Elk River
	Rice Creek

Watershed information is from Minnesota Department of Natural Resources (DNR) - Division of Waters, Minnesota Watersheds, 1999.



Prepared by Stearns County Soil and Water Conservation District (SWCD)



November 2009